

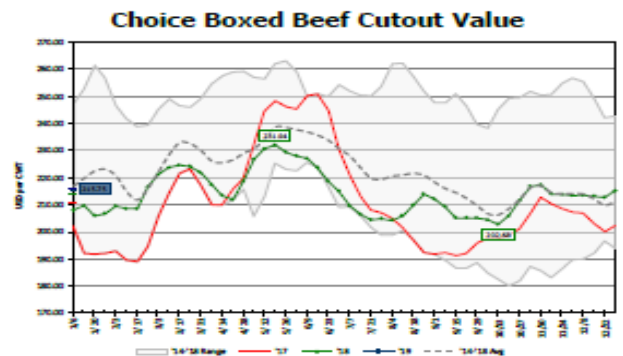
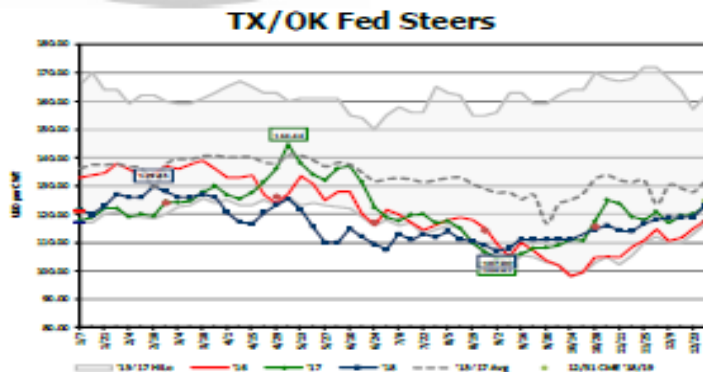


January 17, 2019

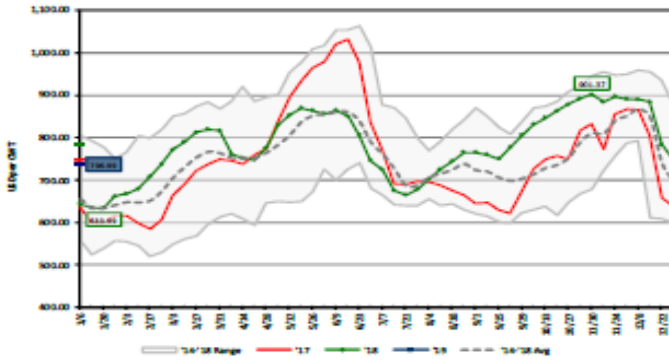
## BEEF

Last week's slaughter was at 626,000 head and cash cattle weekly weighted average of \$124/cwt range. This week's slaughter is estimated to be 625,000 head with live cash feeder ask of \$127/cwt and packer bids coming in at \$124/cwt hoping to hold with steady money from last week. Chucks and rounds are seen trading mostly steady to higher on revived retail demand in light of forecast weather and increased in home cooking over the next month. Ground beef is trading mostly steady with some mixed pricing from packer to packer based on inventory position. Ribs have upside potential on improved position and short-term demand. Loin meat is trading mostly steady with some upside potential on improved retail demand. Fresh 50% trim is holding steady as well as the leaner product. Import offer going forward are rated steady to higher with increased global interest and slightly reduced production numbers. Trades here in the US are slow with many buyers pushing for lower money and some spot offers moved lower to get sales.

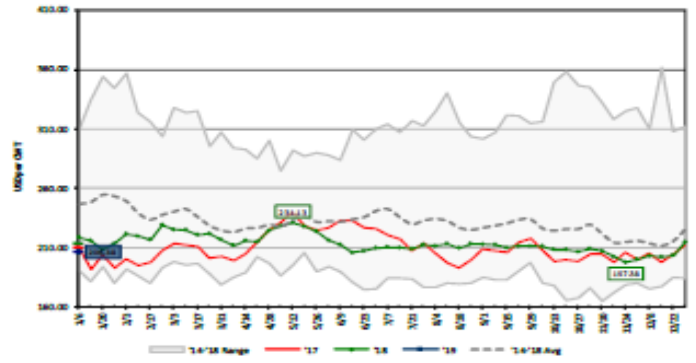
- Loins - Steady
- Rounds - Steady to higher
- Chucks - Steady to higher
- Ribs - Steady
- Grinds - Steady



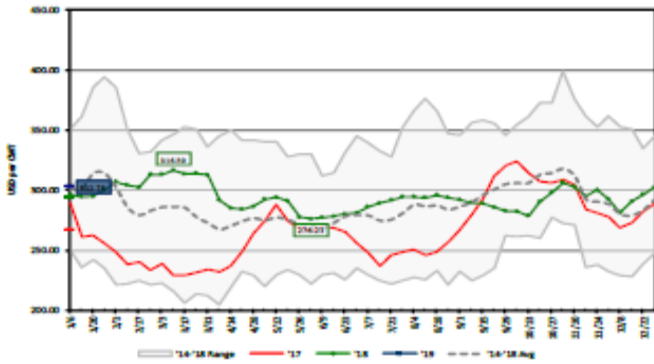
### C112A 3H Ribeye



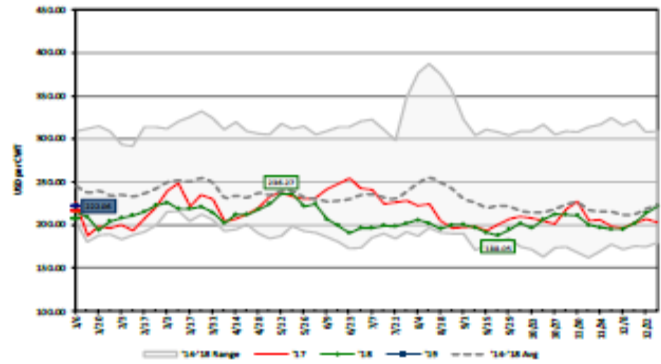
### C114A 3 Shoulder Clod



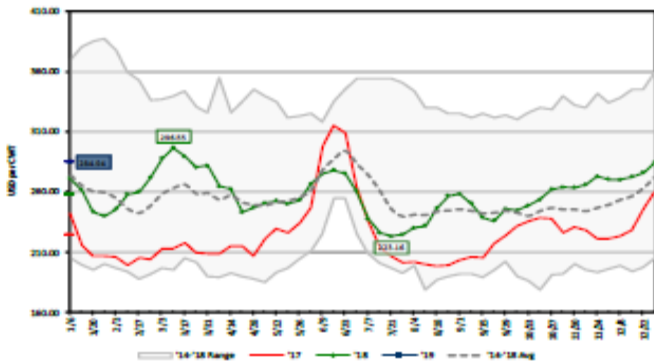
### C116A Chuck Roll



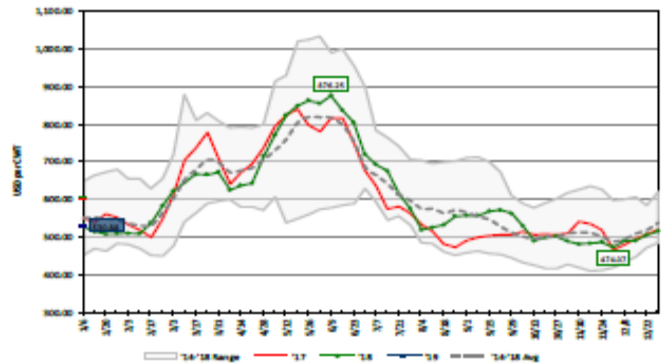
### C168 3/4" Top Inside Round



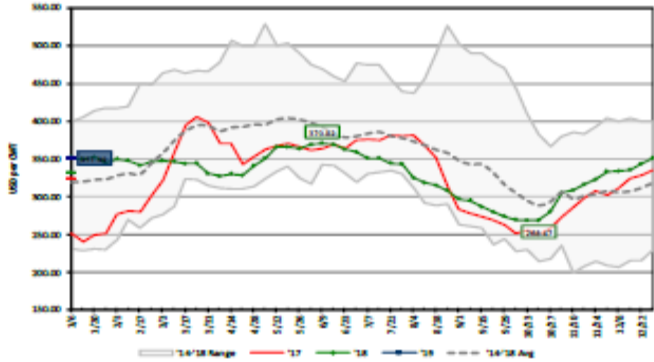
### C120 Brisket



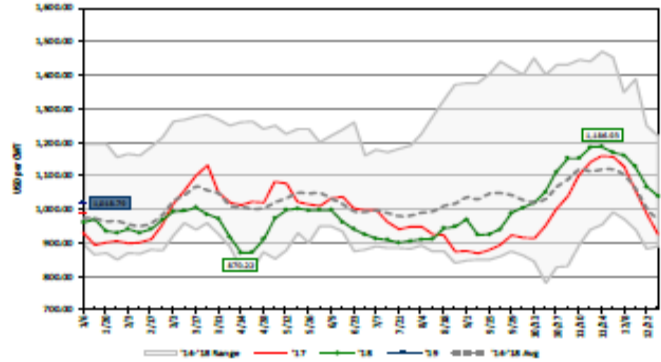
### C180 3 0x1 Strip

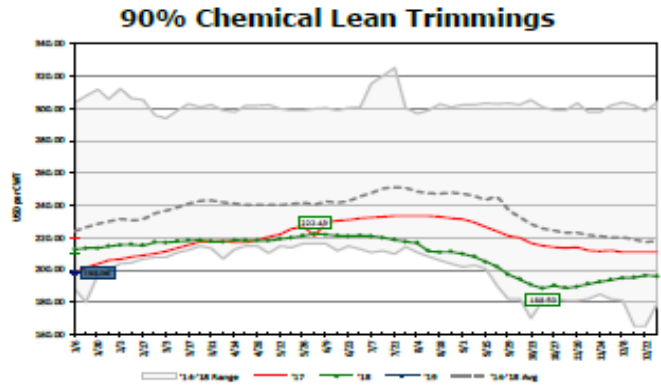
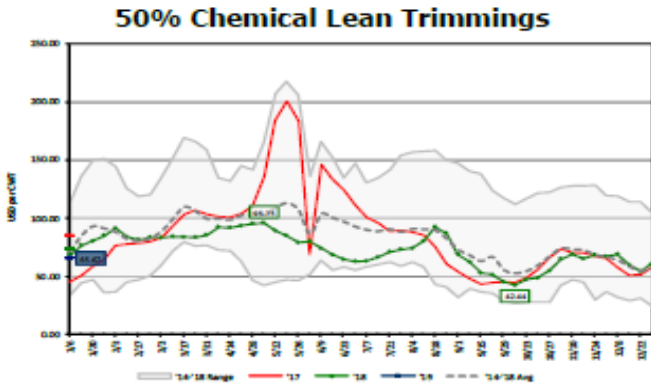


### C184 3 Top Butt



### C189A 4 Tender



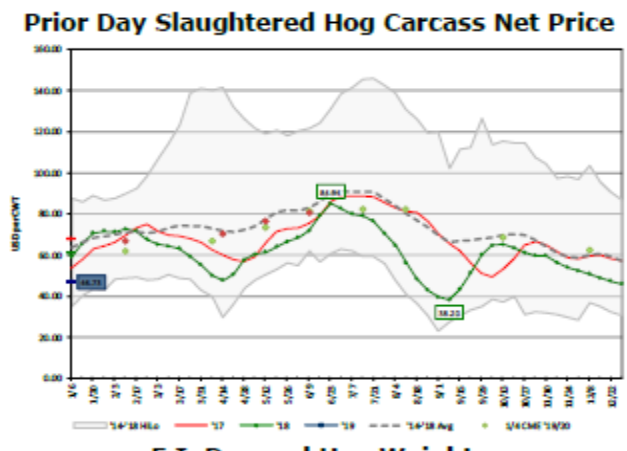
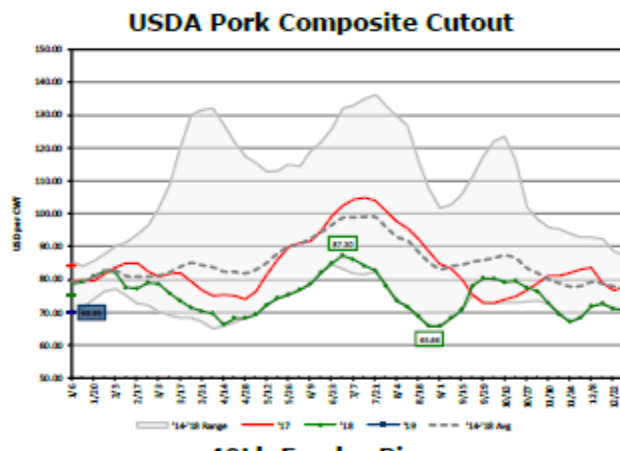


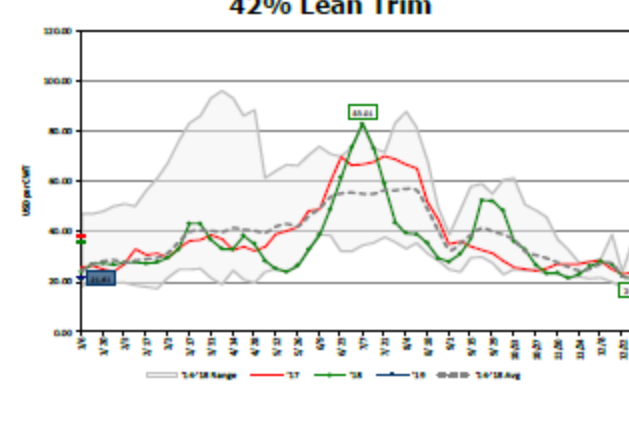
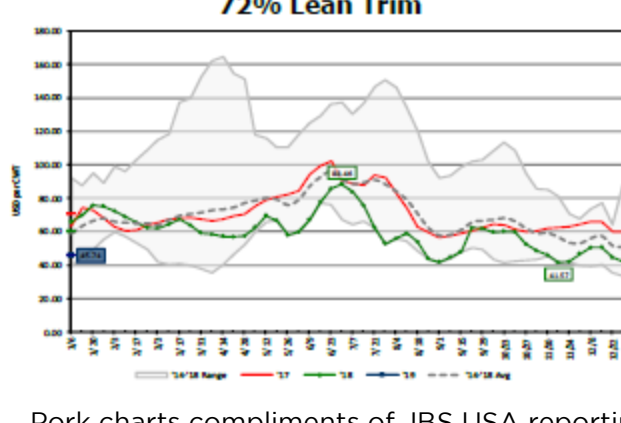
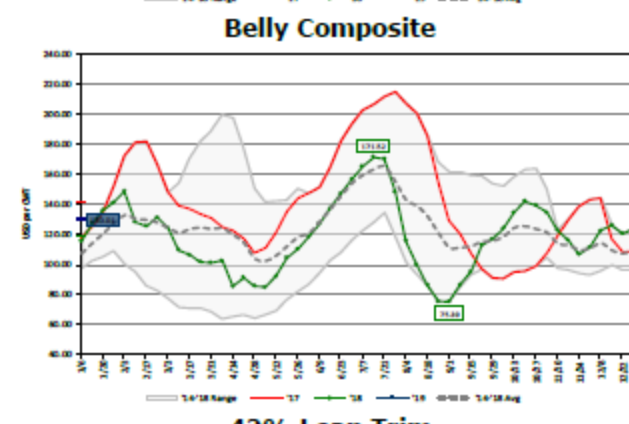
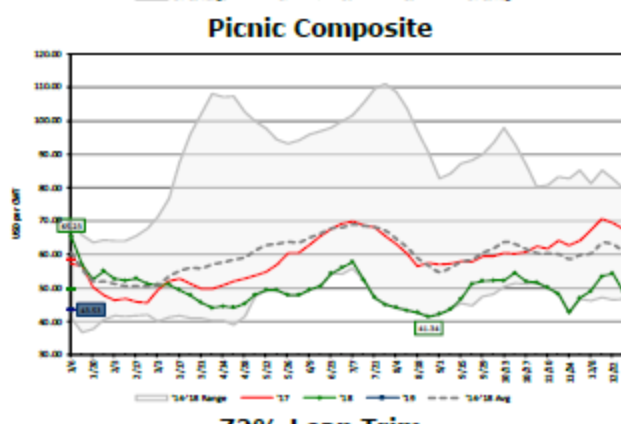
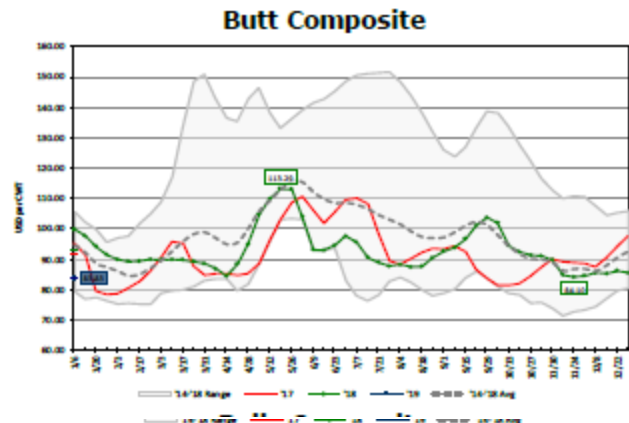
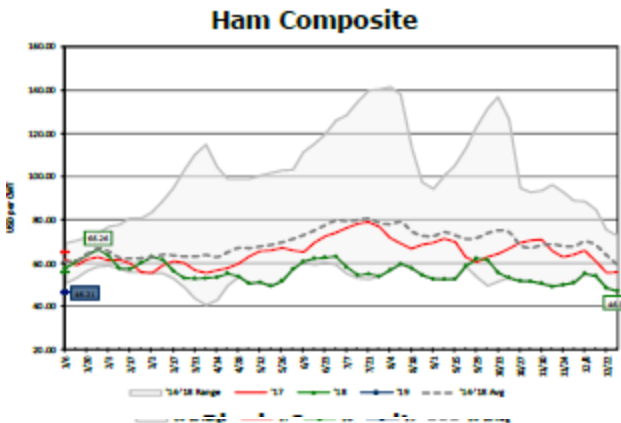
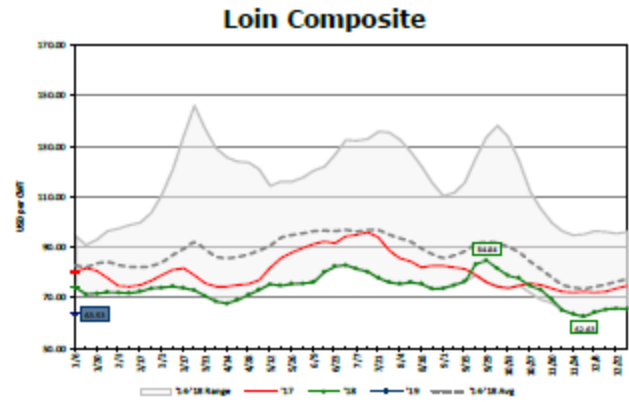
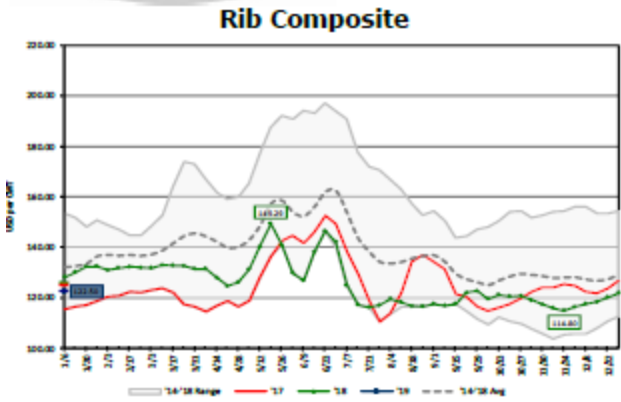
All Charts compliments of JBS USA reporting

## PORK

Last week's harvest was at 2.565 million head on live cash cost of \$38.51/cwt weighted average. This week's kill is estimated to come in at 2.480 million head with live trading at \$39.52/cwt. The actual weekly slaughter adjusted lower in light of the current heavy storm passing through pork producer areas. Getting animals to slaughter and adequate employee coverage are causing reduced production rate and plant closures. Ham and belly sales are seen at steady levels on good domestic and export interest. Trim is mixed on packer inventory position. Loins, Butts, Picnics and ribs are trading in a wide range on soft retail demand. Heavy production levels are weighing on cutout values. This week slightly lower kill may help to an extent mostly in the concept and expectation relative to media talk.

- Hams- Steady
- Butts - Just Steady
- Ribs - Soft
- Trim - Steady
- Loins - Soft





Pork charts compliments of JBS USA reporting  
 This publication is provided as a privilege. Forwarding without permission may result in the loss of that privilege.

# CHICKEN

Atlanta, GA. Wed. Jan. 16, 2019 USDA Market News

Broiler/Fryer: Daily National Broiler Market at-a-Glance Whole broiler/fryer prices are steady to instances weak. Supplies are adequate for current needs. Retail and food service demand is light to moderate. Floor stocks are generally in balance. Market activity is slow to moderate. In the parts structure, jumbo boneless skinless breasts is steady at best, balance of white items are steady to firm with wings strongest. The market on leg quarters is steady to firm, balance of dark items mostly steady. Offerings of wings are short of trade needs; tenders are moving well and boneless skinless breast and dark meat cuts sufficient for current needs. Market activity is slow to moderate. In production areas, live supplies are moderate; weights are mostly desirable.

SOURCE: USDA LIVESTOCK, POULTRY & GRAIN MARKET NEWS DIVISION

Atlanta, GA 404.562.5850 email: [Atlanta.lpgmn@ams.usda.gov](mailto:Atlanta.lpgmn@ams.usda.gov)

<http://www.ams.usda.gov/market-news/livestock-poultry-grain>.

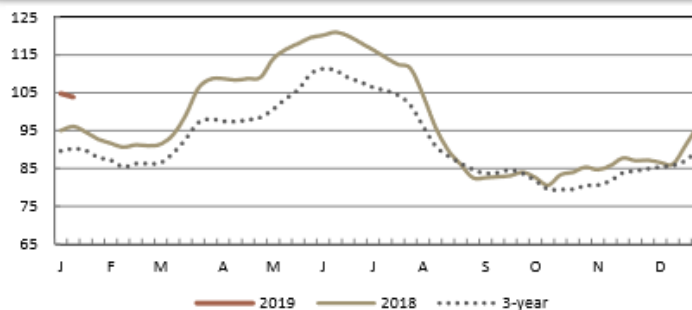


USDA Weekly National Whole Broiler/Fryer Report (Fri)  
Agricultural Marketing Service  
USDA Livestock, Poultry, & Grain Market News

Friday, January 11, 2019

## NATIONAL COMPOSITE WEIGHTED AVERAGE

	Wtd Avg	Change	1,000 lbs.
<b>This Week:</b>	103.87	↓ -0.92	10,784
<b>Last Week:</b>	104.79		11,732
<b>Last Year:</b>	96.09	↑ 7.78	12,189
<b>Monthly Composite Weighted Average</b>			
<b>Dec</b>	89.75		47,974



## BREAKOUT OF NATIONAL DATA

	THIS WEEK			LAST WEEK	
	Price Range	Wtd Avg	Change	1,000 lbs.	Wtd Avg 1,000 lbs.
<b>WOGS:</b>					
Composite WOGS:	85.00 - 124.00	104.96	↓ -1.52	7,380	106.48 8,473
2.50 lbs and Lighter:	95.00 - 124.00	107.77	↓ -2.30	1,205	110.07 1,707
2.51 lbs to 3.50 lbs:	85.00 - 121.00	103.77	↓ -1.57	5,646	105.34 6,319
3.51 lbs and Heavier:	95.00 - 121.00	111.23	↑ 2.33	528	108.90 446
<b>Whole Birds:</b>					
Composite Whole Body:	93.00 - 124.00	101.51	↑ 1.12	3,405	100.40 3,259
3.00 lbs and Lighter:	97.00 - 124.00	100.84	↓ -2.32	1,790	103.16 1,202
3.01 lbs and Heavier:	93.00 - 122.00	102.26	↑ 3.48	1,615	98.79 2,057



**Processed Chicken: National Mechanically Separated Chicken (Fri.)**

Fri. Jan 11, 2019

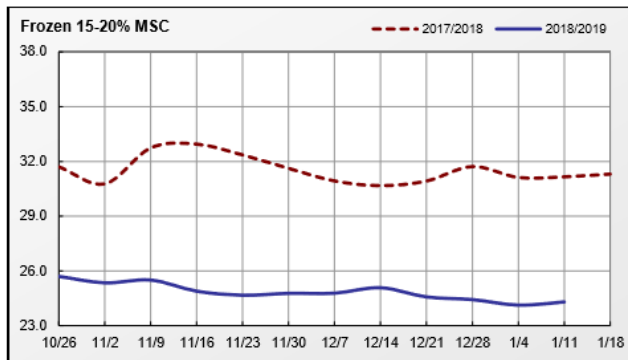
Agricultural Marketing Service  
 USDA Livestock, Poultry & Grain Market News

(F.O.B. Shipper Dock or equivalent; negotiated prices in trucklot and less-than-trucklot volumes reported in thousand pound quantities, cents/pound; delivery within 2 weeks.)

Prices of 15-20% MSC are trending steady to weak. Spot market demand is light to moderate into both domestic and export channels. Supplies are mixed, as industry assess markets following two consecutive weeks of disruptions in productions. Processing schedules returns to normal. Market activity is slow. Supplies of raw materials range light to available, mostly moderate. Frame prices are trading at 8-10 cents FOB.

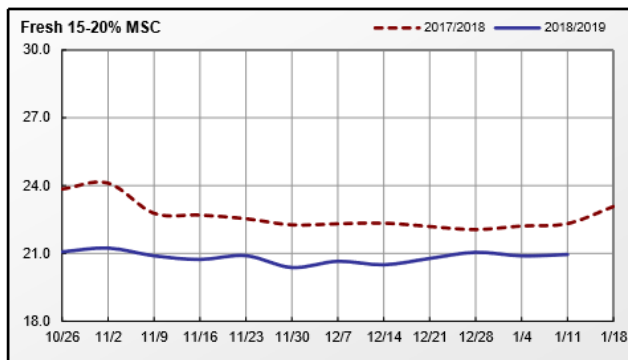
**Weekly MSC Weighted Average Prices (cents/pound) and Volumes (1,000 pounds)**

Fat Content	Frozen			Fresh		
	11-Jan-19	Last Week	Last Year	11-Jan-19	Last Week	Last Year
<b>15% or Less</b>						
Price Range			-			-
Wtd Avg Price			-			-
Volume Traded	-	-	-	-	-	-
Volume Exported	-	-	-	-	-	-
<b>15-20%</b>						
Price Range	21.00 - 25.00	21.00 - 25.00	29.00-33.00	19.00 - 23.50	19.00 - 23.50	20.00-25.00
Wtd Avg Price	24.30	24.13	31.16	20.95	20.89	22.31
Volume Traded	550	440	706	1,690	1,285	1,499
Volume Exported	550	440	706	-	-	82
<b>20% or More</b>						
Price Range			-			-
Wtd Avg Price			-			-
Volume Traded	-	-	-	-	-	-
Volume Exported	-	-	-	-	-	-



**Monthly MSC Weighted Average Prices (cents/pound) and Volumes (1,000 pounds)**

Fat Content	Frozen			Fresh		
	Dec 2018	Nov 2018	Dec 2017	Dec 2018	Nov 2018	Dec 2017
<b>15% or Less</b>						
Wtd Avg Price	-	-	-	-	-	-
Volume Traded	-	-	-	-	-	-
Volume Exported	-	-	-	-	-	-
<b>15-20%</b>						
Wtd Avg Price	24.74	25.08	31.16	20.71	20.81	22.23
Volume Traded	2,129	2,390	3,535	6,281	6,150	7,262
Volume Exported	2,007	2,390	3,535	-	204	571
<b>20% or More</b>						
Wtd Avg Price	-	-	-	-	-	-
Volume Traded	-	-	-	-	-	-
Volume Exported	-	-	-	-	-	-



Note: Volume exported refers to that portion of the total volume that is destined for export markets.

Source: USDA Livestock, Poultry, & Grain Market News ([www.ams.usda.gov/market-news/livestock-poultry-grain](http://www.ams.usda.gov/market-news/livestock-poultry-grain))  
 Atlanta, GA (404) 562-5850 - Atlanta.lpgmn@ams.usda.gov / Des Moines, IA (515) 284-4460 - desm.lpgmn@ams.usda.gov

Prepared: 11-Jan-19 12:34 PM Central Time by BGKJRF

# TURKEY

DES MOINES, IA

Thur. Jan. 17, 2019

USDA Market News

## DOMESTIC MARKET HIGHLIGHTS

The market on frozen 8-16 lb. hens and 16-24lb. toms is steady for current shipments and steady to firm deferred. Demand light for current deliveries, moderate to good for deferred. Processor offerings of frozen Grade A 8-16 lb. hens and 16-24 lb. toms from 2018 production light to moderate. Frozen Grade A basted equivalent processor offering prices on a national basis from 2018 production for 8-16 lb. hens are 77.00- 85.00 cents FOB and 16-24 lb. toms 77.00-84.00 cents FOB for current deliveries. No trading reported. The market on breast meat and tenderloins is steady with a steady to weak undertone. The market on white trims is steady to weak, mostly steady. Demand light. Offerings light to mostly moderate. The market on bone-in breasts steady with mixed undertones. The market on tom bulk parts is steady to weak with full-cut wings steadiest. Demand light. Offerings light to mostly moderate. The market on thigh meat is steady to weak.



The mechanically separated turkey (MST) market is steady at best with fresh having a steady to instances weak undertone. Demand light. Offerings light to moderate. Trading slow to moderate centering on fresh MST.

### EXPORT MARKET HIGHLIGHTS

Trading slow. The market is steady to weak, mostly steady. Demand light. Offerings light to moderate.

Source: USDA Livestock, Poultry, & Grain Market News

Des Moines, IA 515.284.4460 [desm.lpgmn@ams.usda.gov](mailto:desm.lpgmn@ams.usda.gov)

<http://www.ams.usda.gov/market-news/livestock-poultry-grain>

**USDA** TURKEY: Weekly National Fresh and Frozen Whole Young Turkeys (Fri)  
 USDA Livestock, Poultry, & Grain Market News  
 Weighted Average Prices, cents per pound, F.O.B. Shipper Dock Basis - Week Ending January 11, 2019

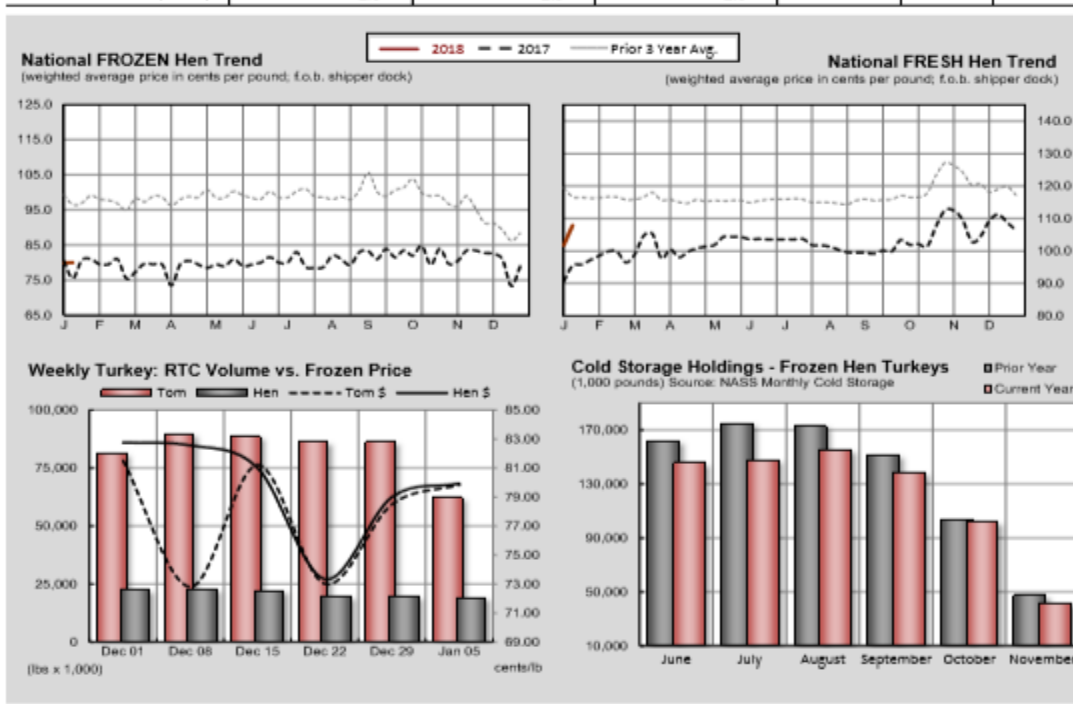
**FROZEN Whole Body Turkeys** - commodity pack or equivalent; minimum 10,000 lb lots; current negotiation for delivery within two weeks.

U.S. Grade A - FROZEN	Current Week		Last Week		Last Year		December Averages		
	wtd avg (cents/lb)	volume (000 lbs.)	wtd avg (cents/lb)	volume (000 lbs.)	wtd avg (cents/lb)	volume (000 lbs.)	This Month	Last Month	Last Year
8-16 lb. (Hens)	80.01	2,040	79.93	407	75.50	880	79.85	82.24	80.16
16-24 lb. (Toms)	80.43	2,608	79.83	614	80.50	320	76.88	79.50	79.26

<sup>1</sup> based on offers.

**FRESH Whole Body Turkeys** - with timers; for delivery within the next seven days.

U.S. Grade A - FRESH	Current Week		Last Week		Last Year		December Averages		
	wtd avg (cents/lb)	volume (000 lbs.)	wtd avg (cents/lb)	volume (000 lbs.)	wtd avg (cents/lb)	volume (000 lbs.)	This Month	Last Month	Last Year
<b>Priced At Time Of Sale:</b>									
8-16 lb. (Hens)	107.87	115.0	101.72	43.0	95.50	38.0	111.07	112.05	109.18
16-24 lb. (Toms)	105.13	75.0	101.72	43.0	94.53	36.0	110.72	112.07	109.02
<b>Price To Be Determined:</b>									
8-16 lb. (Hens)	--	2.0	--	2.0	--	2.0	--	--	--
16-24 lb. (Toms)	--	2.0	--	2.0	--	2.0	--	--	--



Source: USDA AMS Livestock, Poultry & Grain Market News; Des Moines, IA (515) 284-4460; Email: [desm.lpgmn@ams.usda.gov](mailto:desm.lpgmn@ams.usda.gov)

[www.ams.usda.gov/market-news/livestock-poultry-grain](http://www.ams.usda.gov/market-news/livestock-poultry-grain)  
 Prepared: 11-Jan-19 9:54 AM Central Time